

PRINTED FOR AND BY  
CHRISTMAS VALLEY  
PROPERTY OWNERS

# Christmas Valley

## GAZETTE

... IN THE  
HEARTLAND OF  
CENTRAL OREGON

VOL. 1 — No. 3

CHRISTMAS VALLEY, OREGON

15 CENTS

MAY, 1962

# Successful Farmers' Day Land Demonstration Days Draws 1,000



Tuesday, 7 a.m. El Monte — Aboard the plane with Mr. and Mrs. Carlo Giuntini, Doctor Covington and Frank Galgano, the pilot.

Lots of fog . . . low ceiling . . . Frank said he would have to go out of the airport on instruments.

Forty miles later . . . over Bakersfield . . . clear skies. Continuing the trip . . . over the fabulous San Joaquin Valley. Looking down on this vast network of farms, ranches and towns, it is easy to believe, as they predict, that in 4 or 5 years California will be the most populous state in the Union.

8:30 — over Sacramento . . . 9 o'clock — over the famous Feather River Country. There is a generous snow-pack on all of the mountains which indicates plenty of water for the next year or two.

A few minutes later — see Mount Lassen — still going over the snow-packed mountains to arrive at the Oregon boundary.

11 o'clock . . . landing at Christmas Valley, a short trip to the motel to leave our baggage (glad to see that there are four new  
(Continued on Page 2)

## Lakeview Company Plans to Start Lumber Business

Another business is forthcoming for bustling Christmas Valley.

Don Klaus, owner of the Lakeview Lumber Co., has purchased 10 acres of land on the south side of Christmas Valley road and will start a lumber yard business there.

It will be called the Christmas Valley Lumber Co.

"We feel this is a very important step in the progress of our Christmas Valley community," said Carlo Giuntini, president of M. Penn Phillips Co.

"With this new facility, we will have a lumber yard near at hand to supply the greatly expanding building program at Christmas Valley. This certainly will make for a more efficient operation and will provide added service to residents, lot owners and future lot owners at Christmas Valley," said Giuntini.



MINT MAY PROVE TO BE SPECTACULAR CROP—W. A. Snapp of Madras created much interest with his mint planting at Farmers' Land Demonstration Days. Mint is valuable crop.

## 3 Model Homes Now Available for Occupancy

Three beautiful model homes in Christmas Valley have been completed and are ready for occupancy, according to Warren Morton, Christmas Valley Project Manager.

The homes, which range in price from \$9,390 to \$10,890, will have water, sewage systems, graded driveways, plus other specifications listed below:

ARAWAK — 3 bedroom (C-1 Lot), located on Lot 3, Block 2, Unit 3. Full price is \$10,890. Down payment is \$790 and monthly payments \$81. Interest is 7% per annum.

ARAWAK — 2 bedroom (R-1 Lot), located on Lot 9, Block 7, Unit 3. Full price is \$9,390. Down payment is \$690 and monthly payments \$69. Interest is 7% per annum.

ARAWAK — 3 bedroom (R-1

## CHRISTMAS VALLEY LAKE TO BE READY FOR RECREATION IN JUNE

The employment of double crews on all types of construction on the Christmas Valley Lake pushed the completion—or should it be filing date? — well ahead of schedule, according to Phil Washington, General Project Manager of Christmas Valley.

"Barring unforeseen complications," said Washington, "we should have the Christmas Valley Lake filled sometime in June. We hope all our property owners and their friends will be able to time

their vacations in order to visit their own land in Christmas Valley and take in all the recreational fun available to them.

"We'll have much to offer visitors," continued Washington. "We're going to stock our Christmas Valley Lake with plenty of rainbow trout, blue gill, bass, crappie and catfish.

"Besides fishing and swimming, there'll be boating and water skiing. We're setting aside a portion of the big lake for a water ski area. And, of course, there'll be plenty of land for holding nice old-fashioned family style picnics," said Washington.

Christmas Valley Lake, which will be administered by the Christmas Valley Mutual Water Improvement District in strict compliance with State and Federal rules and regulations, won't exactly be a pond.

It will be more than two-thirds of a mile long (3500 feet) with a capacity of 176 acre feet. Christmas Valley Lake will be from 325 to 600 feet wide and will be from 6 to 8 feet deep, thus eliminating much danger to young children.

It will be more than two-thirds of a mile long (3500 feet) with a capacity of 176 acre feet. Christmas Valley Lake will be from 325 to 600 feet wide and will be from 6 to 8 feet deep, thus eliminating much danger to young children.

The Baerts said they are allotting space in the store for the eventual formation of the Christmas Valley Post Office.

## Phillips Terms Results, Response 'Very Gratifying'

"Well, we certainly were surprised at the large turnout of 1,000 visitors for our very first Farmers' Land Demonstration Days. The results, I feel, were gratifying to all of us who pitched in to make this important 5-day event such a success."

That was the reaction and opinion of M. Penn Phillips, chairman of the M. Penn Phillips Co., the developers of Christmas Valley.

"All the fine people here at our Model Farm worked hard and special credit must go to Warren Morton, our Project Manager, and Reavis Joiner, manager of our Model Farm," added Phillips.

**Mint Planting Highlight**  
Demonstrations of land preparation, fertilizing, seeding methods, sprinkler demonstrations, plowing, discing and other interesting experiments were shown interested observers at the 40-acre Christmas Valley Model  
(Continued on Page 8)

## GROCERY STORE EXPECTED TO OPEN IN JUNE

Al and Connie Baert, who said their construction plans are well ahead of schedule, expect to open their Christmas Valley Grocery Store in the first week of June.

The store will be located on the corner of Christmas Valley Lane and Christmas Tree Road.

It will be a spacious 2,000 sq. ft. building. The Baerts said they will carry a complete line of general merchandise, including groceries, meats, vegetables and hardware.

The Baerts said they are allotting space in the store for the eventual formation of the Christmas Valley Post Office.

## BIG NEW WELL DRILLED; WILL SUPPLY WATER FOR 500 HOMES

"We expected it to happen, naturally, but not so soon," said president Carlo M. Giuntini, "but we've already outgrown our water system at Christmas Valley.

"So we've recently drilled Well No. 2. This new well will have a capacity of 2,000 gallons a minute, which is enough water to easily accommodate the needs of 500 homes," said Giuntini.

A 7,500 gallon pressure tank and a 100 horse power booster pump to augment Well No. 2 have been ordered and are enroute, ac-

cording to Penn Thayer, president of the Mutual Water Improvement District.

The pressure tank and pump will be installed shortly, Thayer said.

To illustrate the tremendous increase in water supply for home use with the drilling of this well, Thayer points out that Well No. 1 has a capacity of only 300 gallons a minute. Well No. 1 is still in use.

Gordon Goeres of Silver Lake drilled the new Well No. 2.

M. Penn Phillips Co.  
Box 888  
Azusa, Calif.

RETURN REQUESTED

BULK RATE  
U.S. POSTAGE  
PAID  
Permit No. 143  
Azusa,  
California

# Christmas Valley GAZETTE

A Santana Publication  
Business Office  
742 N. Loren Ave., Azusa, California  
Subscription: \$1.50 for 12 Issues  
Single copy — 15c.  
Advertising rates available on request

## PARDON OUR DUST

I guess I'm the most unpopular character in Christmas Valley these days. When I drive down the street, I get the same feeling that must come over a dog catcher when he drives his truck around the neighborhood.

The cook at the Lodge kind of growls when she serves me a cup of coffee. And on wash day I keep out of the women's way, as much as I can.

You see, I'm the guy who is responsible for all this dust we've been living with in Christmas Valley for the last few weeks.

I'm the guy who sees to it that all these caterpillar tractors, road graders, scrapers, gravel trucks, grid rollers and other earth movers are speeding around for such long hours.

I realize the problems I am creating, but please appreciate my situation.

The people in the main office want all this work done, NOW. They want to have water in the lake by June 1st.

They want the roads, landscaping around the Lodge, the golf course, the dude ranch and the driving range all completed as soon as possible.

This requires lots of heavy equipment. And moving the huge amount of earth creates dust.

Bear with me folks. It's only a temporary situation.

As soon as I can, I'll have grass and plants around the Lodge, water in the lake, grass on the dude ranch and driving range and the road and water systems completed.

Progress, the way we are accomplishing it in Christmas Valley, brings a little temporary discomfort. But the final results will be well worth it!

Thanks for your patience.

HAROLD BOYER,  
General Superintendent.

## OWNER OFFERS SUGGESTION

Mr. Harold Boyer,  
President,  
Christmas Valley Chamber of Commerce,  
P. O. Box 41,  
Silverlake, Oregon.  
Dear Mr. Boyer:

My wife and I received your kind invitation to join the Christmas Valley Chamber of Commerce which we accept with pleasure. We hope that your aim to make it the liveliest Chamber of Commerce will materialize. We note that you want members to help you to promote our Chamber to make it so.

After reading your letter I thought to myself how I can help. With the job I hold in San Francisco, certainly it will be difficult for me to advertise Christmas Valley to hundreds and hundreds of people.

BUT it will certainly be helpful you and the Christmas Valley Gazette if some solid advertising can be done to make people who are going through the State of Oregon to the World's Fair at Seattle to come via Christmas Valley. I believe this suggestion can be of help.

Just the other day I dropped in to the Shell Touring Office asking about the route to Seattle from San Francisco. Their representative was kind enough to show me on a marked map the itinerary and when I made mention of Christmas Valley, he drew a blank face.

There we have it! And imagine in that office alone there were hundreds of requests made through the mail for the Shell Touring Office to have routes made out to them to go to Seattle!

I would imagine this free service of Shell is manifested not only in San Francisco but statewide. This, of course, includes Nevada, New Mexico, Arizona, Oregon. You can imagine what wonderful results it will bring to Christmas Valley if it was publicized through the Shell Touring Offices.

I am not only thinking of the Shell Offices because I feel that the same service is given by Standard Oil stations, too. I think it will be an excellent idea if something in the way of having Christmas Valley advertised through this medium was done. Having worked in a travel agency before, I do know they do not care for this sort of thing. After all, they are in the business and would be of help. But for the Shell and Standard Touring offices, I think they will gladly assist you in more ways than one.

A copy of this letter is being sent enclosed for the Christmas Valley Gazette if you think it will help them, too. Your President, Mr. Carlo Giuntini, was very kind to reply to my letter. I believe the above medium will be a real way to publicize the Chamber of Commerce and also help to build it in the manner that you as President would like it to.

Closing with my best wishes and thanking you again.

Yours sincerely,  
FRANK ROZARIO,  
108 20th Ave., San Francisco, Cal.

## PENN POINTS

(Continued From Page 1)

units since I was here last) . . . to the Clubhouse for lunch, where we were greeted by Grace and Mel Brown, Warren Morton, our project manager; and Hap Taylor, the real estate broker from Bend.

A delightful lunch; I thought it was and so did Doc and Frank who had a second helping of spaghetti . . . Doc doesn't need to diet and Frank said he would use saccharin in his coffee to make up for the second helping of spaghetti.

After lunch a trip to the model farm with Warren Morton where much progress has been made.

Saw the sheep and chickens and the milk cow with two calves. Went over the layout of the model farm, found that they were planning to plant alfalfa, several kinds of native grasses, some row crops and vegetables, all under the guidance of the local Farm Advisor.

They also informed me that they had planted one and a quarter acres of Mint. They tell me that if it is successful it will be a very lucrative crop.

I can't understand what they would want with so much Mint. In fact, I can't see what they would do with Mint from one and a quarter acres, let alone several hundred acres, when all I know that you can do with it is make Mint jelly for lamb, Mint Juleps and gum.

There must be other uses for they say that they can contract for the sale of all they produce.

Observed from the Clubhouse window on Main Street . . . street light burning all day. They say electricity is so cheap they can't afford the time to turn it off. A crew working on the roof of Al Baert's store, looks like it will be finished by the time we get here on our next trip. Dozens of dump trucks hauling gravel for the streets . . . cement trucks with material for foundations . . . a truck-load of pipe for the water lines . . . the landscaping crew putting the finishing touches on the Clubhouse grounds . . . graders making streets and the vast earth-moving equipment working on the lake. (This is a far cry from the days when Charlie Broughten was making streets for us in El Monte with four prancing mules and a hand scraper).

A delightful dinner at the Clubhouse where, I think, everybody ate too much. I know I did. A smoke in front of the fireplace watching the television for a while, playing a little pool out on the porch looking across the desert under a full moon and then to bed for a good night's sleep.

Walking to the Clubhouse next morning for breakfast I saw Pilot Galgano attempting to pilot a saddle horse around the ranch. His connection with the saddle was not nearly as smooth as it is at the controls of the plane. He seemed to be having difficulty with the horse. I suppose he will be requisitioning an automatic pilot for the horse.

While we were at breakfast we saw a small plane coming in from the direction of Bend. A few minutes later Bill Stanfill, who is building the filling station, walked into the Clubhouse and presented me with the most beautiful 22 inch Rainbow Trout that I have seen in many a day. He said he caught it that morning and immediately flew in with it so we could show people in Los Angeles the kind of trout they have in Oregon.

10 o'clock . . . back in the plane. Frank must have picked up a tail

# History Of Lake County Told by Famous Author

BY BETTY MOREHOUSE

During the first 100,000 years of the Pleistocene period, the great ice sheets of the far North crept ever southward. Then they receded and temperate climates again prevailed. Four times in all the glaciers crunched down and four times they withdrew. The latest retreat began some 10,000 years ago and is still receding today.

Sometime during the ice age, it is presumed that Primitive Man crossed the Bering Straits into America, perhaps between 10,000 and 20,000 years ago. Early Man left many evidences indicative of his presence within the boundaries of Lake County, projectile points, petroglyphs and implements.

One of the richest sources of the artifacts of Early Man are the various caves in which he lived. Two of these caves, located in Lake County, have been excavated under the supervision of a team of scientists from the University of Oregon. Artifacts of some significance were removed from several others.

### The Paisley Cave

The Paisley Cave lies on a projecting section of the east rim of Summer Lake, about five miles northeast of Paisley. This cave was cut in the Scoriaceous Basalt, by the waves of an ancient lake which at one time, covered the area.

The terraces of this lake, which was more than 100 feet deep, are still to be seen in front of the cave. The cave is about 19 feet long and 16 feet wide. There is a

projecting overhang in front which provided excellent shelter.

### Fort Rock Cave

Fort Rock, from which the valley takes its name, rises some 300 feet above the valley floor. It is the remains of an ancient volcano and masses of molten material once erupted from its vent. The uneroded remains of this molten material, are to be seen in mounds and hillocks, reaching 100 feet or more above the sands of an ancient lake.

In one of these mounds, 1½ miles due West of the Fort, lies the Fort Rock Cave. The cave, which faces south, is approximately 60 feet long and 30 feet wide in the front. It has a projecting overhang and the west wall extends out for some 30 yards. The general shape of the cave is conical.

### Caution Exercised

Extreme caution and care are exercised in the excavation of a cave. Every bit of dirt and residue is carefully screened, and it is especially important to record the strata and level of the cave floor where each artifact is found. This is one of the methods by which the scientist determines the "age" of the artifact.

By digging a trench across the cave floor, it is possible to see how many "ash levels" appear in the cave. As generation after generation lived in the cave, refuse, and the ashes of their fires accumulated on the floor. Then, for some unknown reason, the cave might be unoccupied for a period of time.

When a new civilization moved in, they would lay down a new ash level on the sterile layer of dirt which covered the previous ash level.

Equally important in the Paisley and Fort Rock Caves, was the layer of pumice which appeared in the strata of the floor.

## NEW WEATHER STATION DUE

A new U.S. Weather Bureau cooperative station will be installed just two miles east of the popular Christmas Valley Lodge, center of the multi-million dollar Christmas Valley development.

The weather station, third in this area, will be located at the old townsite of Lake, east of Fort Rock in the Christmas Lake Valley.

Sidney Howick, of the U.S. Weather Bureau's district office in Portland, was in the area to complete arrangements for the installation of the new station.

wind because we landed at El Monte at 1:15 p.m.

It seems that this is a small world . . . you can do a lot of things in a short time.

I think you will find this issue of the Gazette very interesting with a roster of the many people who are working to build your community at Christmas Valley.

You should preserve this issue and you may have extra copies for your friends if you wish.

See you next month.  
. . . Penn

## CONTRACT FARMING

"NO JOB TOO SMALL"  
From Land Clearing to  
Planting.

6 Years Experience in  
Christmas Valley. Over  
600 Acres in Cultivation.

All questions concerning  
your land needs answered.

**John A. Pettus**

P. O. Box 273  
Silver Lake, Oregon  
Phone 576-2228

**Christmas Valley Gazette is Your  
Newspaper  
SUPPORT IT!**

**12 BIG ISSUES FOR ONLY \$1.50**

Christmas Valley Gazette, Box 888, Azusa, Calif.  
Gentlemen: Please find enclosed my check for \$1.50 for a year's subscription.

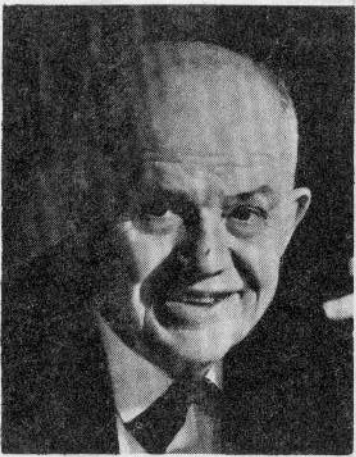
Name \_\_\_\_\_  
Address \_\_\_\_\_  
City \_\_\_\_\_ State \_\_\_\_\_

CVG362

*Working for you and the future ...*

# Christmas Valley

**GET TO KNOW YOUR  
M. Penn Phillips Company ...**

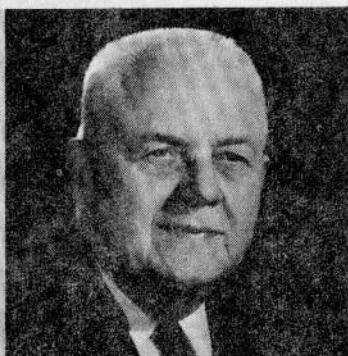


**M. PENN PHILLIPS**, Chairman of The Board — In real estate circles, M. Penn Phillips is referred to as the "Dean of American Land Developers." He has the extraordinary leadership talents needed to inspire and guide vast projects which our company has accomplished and will continue to do in the future. He believes that an organization is only as strong as the accumulated experience of its key personnel. While developing homesites and constructing thousands of homes to the profit of investors, the genial Phillips has fashioned an extensive organization with facilities sufficient to master the most complex challenges of the future.

**CARLO P. GIUNTINI**, President — The planning and operation of the vast network of the M. Penn Phillips Company enterprises is under the capable direction of Carlo P. Giuntini. Determination of operational policies, approval of development blueprints, piloting major sales campaigns, establishing a co-operative atmosphere with civic leaders in community development and spearheading construction of roads, water supply and power all fall under Giuntini's jurisdiction. His knowledge is born of practical experience. At some time in his business career Giuntini has successfully performed nearly every major function in the field of real estate and land development.



**DR. GRAUSE COVINGTON**, Treasurer — Associated with the M. Penn Phillips Company for 25 years, Dr. Covington has been a key figure in the financial success of many of the developments undertaken by the company. He is considered an expert in his field by colleagues in the land development field.



**ARTHUR A. MILLER**, Secretary — Has served with the M. Penn Phillips Company for 34 years. Miller manages an efficient and well balanced administrative office, which has been one of the key features that has added to the great success of the Phillips organization.

# Christmas Valley

## SALES DIVISION

**FARAON J. MOSS**, General Sales Manager  
 —Moss has supervised and licensed the M. Penn Phillips Company salesmen for 10 years. At various times Moss has supervised and directed a sales force of more than 200 men.



Phil Washington



Penn Thayer

Don Kruse



Frank Galgano

Charles Best

Sigmond Diamond



Wayne Buecho

Barbara Moss

Harold Steele

Louis DeSena



Stephen DeSena

Dolley Brothers

Ken Ketchum

Ray Asin

David Goode



Sam Earle

H. G. Joffray

Dalas Richins

Bob Heinzelmann

Irving Goldberg

Chuck Thayer



Pete Holmquist

Hank Ryder

John Chorak

Harold Moon

Larry Moon

Jack Schaeffer

Lawrence Eastes



Gerda Feldman

Harry Forshaw

William Duncan



Don McCabe



**ADDRESS:**  
**Main Office**  
**742 N. Loren Avenue**  
**Azusa, California**  
**Telephone: EDgewood 4-9341**

# OFFICE PERSONNEL

## ACCOUNTING



Robert A. Gray      Ernie Avery      Maurice Binns      Nancy Exton      Melba Ellis

## ESCROW



Pat Selk      Anna King      Betty Smeintana      Betty Blitsch

## INSURANCE



Lee Rea      Bill Jolliffe      Vi Rawlings      Norma Benson      Maedean Heller

## SECRETARIAL



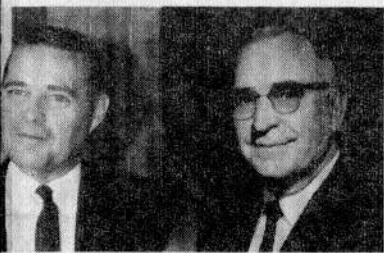
Kay Kellt      Irene Stidston      Jo Garver      Wyannette Zornes



Al Kramer      Thais Aguirre      Beverly Holbrook      Karen Anthony



Daryl Secrist



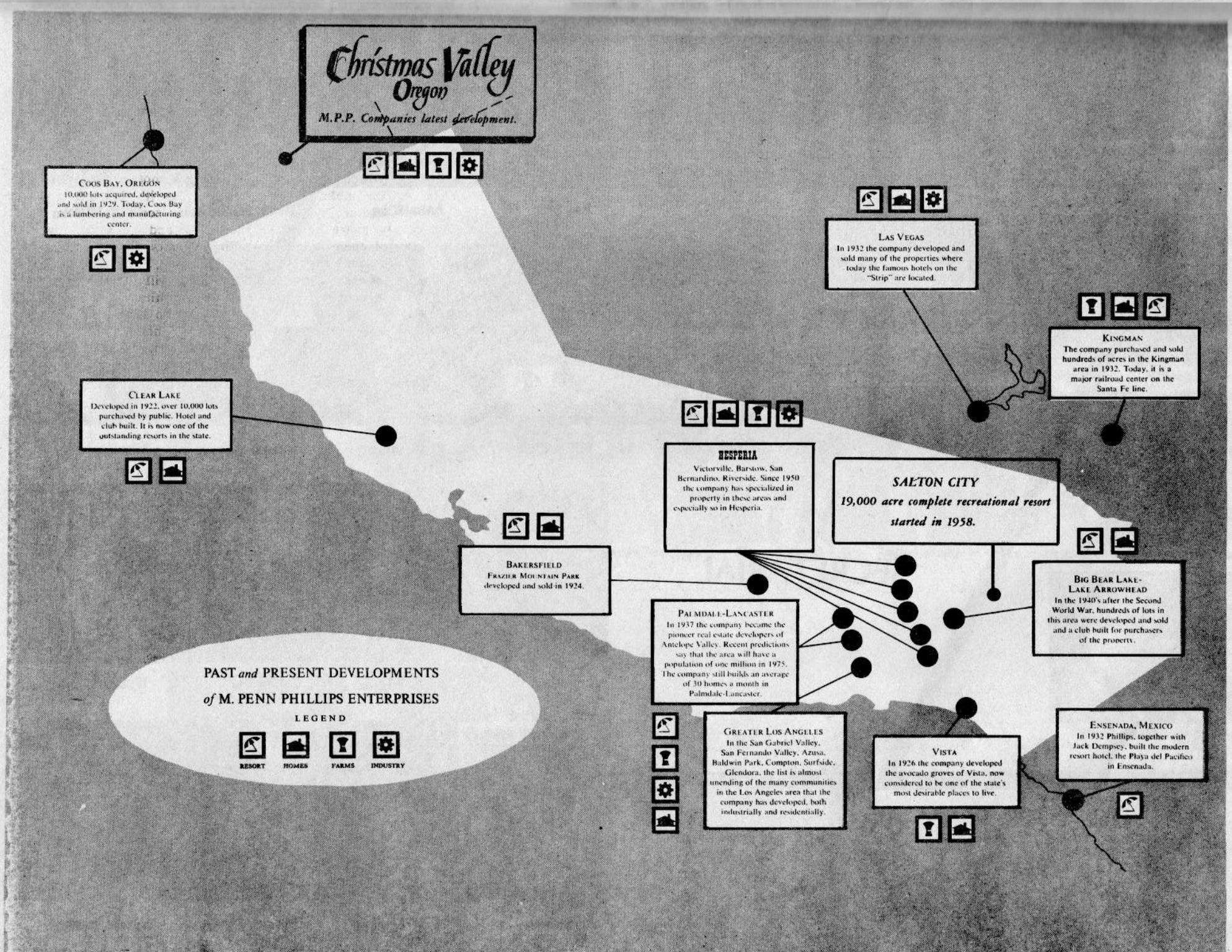
M. Atchison      Herb Smith



# Christmas Valley

## The M. Penn Phillips Company

### Builders of the West



# Kamloops Trout Season To Open Sat., May 26

BY LeROY HERROD  
Fishing and Hunting Editor

Much of Ol' Diamond's appeal comes from the natives and a few out-of-staters who have fished 'an loved' an "petted" her since about 1908, when it was first stocked with rainbow trout. Their fondness shows to this day by their twangy references to it. "Ol' Diamond, they will say, never disappoints you, IF you know WHERE and

## INFORMATION ON OL' DIAMOND LAKE FISHING

### HOW TO GET THERE

From California points — Take 395 thru Reno, Alturas and Lakeview, Oregon. Stay on 395 from Lakeview to Valley Falls, a distance of 23 miles, turn left on Highway 31 to Silver Lake, Christmas Valley and La Pine, Oregon. At La Pine turn left on Highway 97, drive South approximately 42 miles to junction with Oregon Highway 230, then West 19 miles to OL' DIAMOND.

### WHERE TO STAY

Excellent rustic lodge, good meals, housekeeping cabins under same management as Lodge. On lake front — beautiful spot.

Trailer sites and good camp spots through timber between Highway and Lakeshore.

Lodge, two in room, \$10.00 per day. Cabins same price which will accommodate four. Excellent meals in Lodge Dining Room, about \$5.00 per day — three meals — and worth it.

Good store, moderate prices, meats, milk and full line of groceries. Also well stocked fishing tackle counter.

### BEST SEASON

Seven day non-resident angling license \$5.00. All persons over 14 years of age must have license. Legal Trout Season, this area, May 26th to October 31st.

From middle of June to middle of July perhaps best. September and October best fly fishing. Early and late in season can be chilly in this 5182 foot high altitude lake.

For any changes in open seasons contact Oregon State Game Commission, 1634 S.W. Alder St., Portland, Oregon. For reservations Diamond Lake Lodge, Diamond Lake, Oregon.

Excellent concrete launching ramp and you may use your own motor and/or boat. Forest service camping, with good running water \$1 per day. This includes good supply of firewood.

### HOW to fish her."

In my more than 40 years of fishin', I have a mental file of many Fishin' Holes, which are special and to which I would like to return. But, I know that time will run out before I can get around to them all. So, to appease an appetite which probably never will be satisfied, I sweat out the winter months making a list of my favorite fishin' holes.

Then I finally cut the list down to one which is the ONE where I will be on Opening Day.

### Fishermen's Paradise

The ONE for me for the past five years has been Diamond Lake up in Oregon. It is and has everything a fisherman could expect — natural unspoiled beauty, good roads and the finest forestry camps I have ever found. A Lodge with a fireplace, housekeeping cabins, a store, a boat landing with rental and a launching pad for your own boat.

The most important of all is that it has Kamloops Trout. Not just a few Kamloops but many. It is a right good bet that the reader of this "Fish Story" has never caught a Kamloops, and perhaps has never seen one.

A Kamloops is an alien, a "maverick" Rainbow Trout, a hybrid, so to speak, native to British Columbia, Canada. He looks like a Rainbow at first glance, but, if you observe him carefully, you'll see a difference. His color is about the same as that of a Rainbow. His head is much smaller and his beam much broader than the Rainbow.

He can hit harder, run faster, jump higher and resort to more tricks to get rid of the hook, than any fish I have tangled with.

You don't find him in very many lakes as he is a "snootie" feeder, wants certain foods and plenty of it. Also, he needs cold water. He is a fast grower and when planted in water he likes will put on about one pound and a half to two pounds a year.

### Get Bigger, Meaner

Each year these Kamloops were getting bigger and meaner. The top fish checked in to date

weighed 7 pounds.

As in all waters, it is most important to know WHERE to fish. I learned where to fish in Diamond Lake, many years ago. There are two types of fishin' in Ol' Diamond — fly fishing and trolling. The fly fisherman does best in the early morning or late evening, casting over the submerged weed beds. (See map with areas marked). The troller gets the most and best action out in the middle of the lake.

NOTE: When you arrive at Diamond Lake drop in at the Tackle Store on the boat dock or into the office of the Lodge and ask for a map of Diamond Lake. It is free and shows the depths of the entire lake and gives much valuable information. Every fly fisherman has his

pet fly. Those big Kamloops are meat eaters and any fly which simulates a minnow usually gets attention. I have used many flies but, by trial and error, I have eliminated them all, except a fly known as the Chappie and a large Muddler.

Flies on Ol' Diamond should be fished deep, fished slow and with an occasional twitch of the rod tip. This is the method I use when I'm fly fishin'. It works and I take my share of Kamloops. Many of them that I've hooked have "taken" me, snapped a leader, shook themselves loose, and on a couple of occasions just took off taking the fly, line and everything.

In two days I was home in San Clemente. The first thing I did was to put a new sinking fly line on my reel. But this time I backed it up with 100 yards of 9 - pound Dacron Line, because this year those skyrocketing Kamloops will be bigger and meaner than ever. And I don't propose to again have one of those mavericks grab my Chappie fly and take off

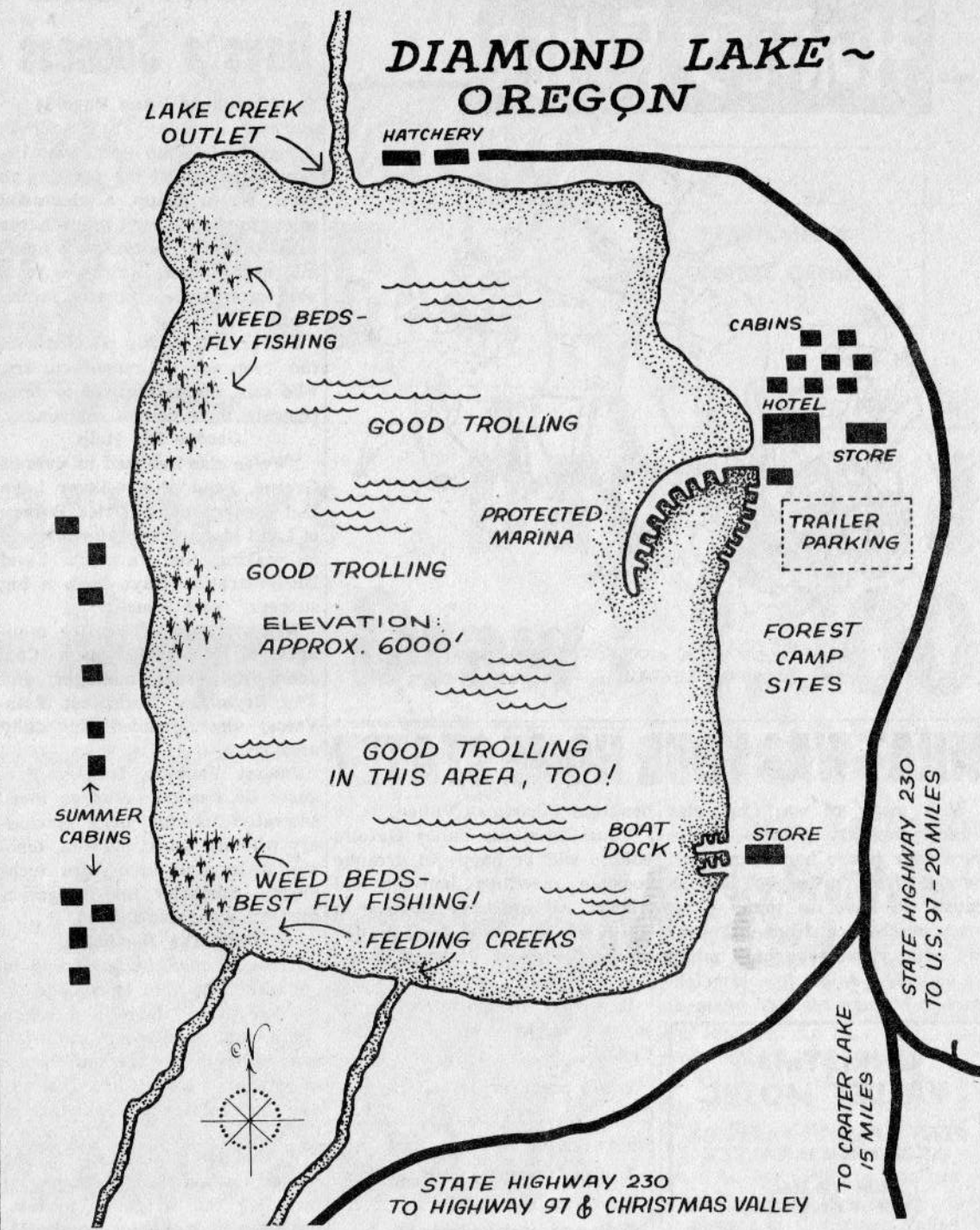
Don't think for a minute I've forgotten you fellows and gals

who like your fishin' trolling fashion. There are more folks who troll for Kamloops than there are those who fish with a fly. Like any type of fishing there are many tricks to the trade.

The most important trick in Ol' Diamond is to troll slow and troll deep. Remember that. Most folks use a motor boat for trolling. A motor, regardless of how you slow it down, works your fly or lure too fast. Turn the motor off and do a little work with the oars — just keep the boat moving, just so that the fly or lure will flutter along like a crippled minnow. Keep that rod tip up so the tip of the rod will absorb the shock.

Fish taken by anglers from Ol' Diamond in 1961 weighed a total of 62,000 pounds. This figure was probably much higher, as some fishermen fail to register their catch with the authorities.

Use of Ol' Diamond, as indicated by registrations at "pay" camp grounds showed 29,800 visitors in 1956; 40,600 in 1957; 38,700 in 1958; 31,200 in 1959; 96,800 in 1960 and 79,000 in 1961. Were you among those present? If not, you'd better get goin'.



# Let's Get to Know More About Our Neighbors in Christmas Valley

Many Christmas Valley Property Owners have written your editors, asking for a personal survey of some of the people who live in beautiful central Oregon. We think it's a great idea.

Naturally, we don't have the facilities or the resources of George Gallup, so we'll need quite a bit of help and cooperation from you in order to undertake this poll.

Everybody is curious about his neighbor. Maybe this poll will bring about lasting friendship through mutual interests. And who knows? Maybe we can even start a romance.

We'll ask you six questions, which you can answer by completing the accompanying handy form. We intend to make this a continuing survey.

From time to time, after we receive considerable information to do so, your editors will keep you apprised of our findings. We'll publish a resume of the poll.

Please mail the accompanying coupon to the Christmas Valley Gazette, Box 888, Azusa, Calif.

1. What recreational activities interest you and your family?  
Swimming ..... Fishing .....  
Water Skiing ..... Golf .....  
Boating ..... Hunting .....  
Tennis ..... Hiking .....  
Horseback Riding .....  
Others? .....

2. To what Fraternal, Professional or Social organization do you or your family belong?  
.....  
.....  
.....

3. When was the last time you visited Christmas Valley and how often do you come here?  
Last visited? .....  
How often? .....

4. Number of members in your family. Ages and sex?  
.....  
.....

5. What is your occupation?  
Retired? .....

6. What do you plan to do with your Christmas Valley lot?  
Hold it as an investment? .....  
Build a home on it? .....  
Your name .....  
Address .....  
Christmas Valley Lot No. ....  
Unit No. ....

## SERVING ALL CENTRAL OREGON

- ★ Full ABC Radio Network News and Sports
- ★ Full Local and Regional News
- ★ Special Farm Programming 6:45 a.m. & 12:45 noon daily
- ★ Programmed Music for the Area
- ★ Special Events and Public Service

## RADIO KBND 1110

5000 Watts  
Bend, Oregon  
Established 1938

# HUNTLEY FISHER



"THE DECOY'S A GREAT IDEA, HUNTLEY... IF IT WAS LEGAL TO HUNT DOES!"

## Farmers' Land Days a Success

(Continued From Page 1)  
Farm.

Highlight of the event was the demonstration on the planting of mint. W. A. Snapp, a successful mint producer in the Madras area, provided visitors with many interesting facts. Mint is a valuable crop and is greatly in demand.

Joiner said he was pleased with the response of manufacturers, who sent representatives to demonstrate their newest machinery.

### Greene Big Help

"We're also indebted to Everett Greene, head of the Silver Lake Soil Conservation District, Bureau of Land Management, for his help in making the Farmer's Land Demonstration Days such a big success," said Joiner.

William Howatt, district manager of Massey-Ferguson Co.; John Engle, sales manager; and Roy Bryant of Northwest Roto-Vator, also attended the daily sessions.

Johnny Faubion, Massey-Ferguson Co. dealer in Madras, demonstrated his company's machinery with the latest plowing, discing, roller and Roto-Vator techniques. Sprinkler and irrigation methods were also studied.

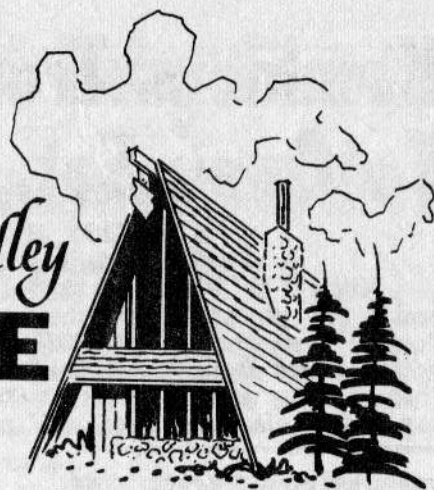
### Only The Beginning

"This is only the beginning of our efforts to gain knowledge toward bettering farm and ranch operations not only here in Christmas Valley but in the entire state of Oregon," said Phil Washington, General Project Manager of Christmas Valley.

Washington pointed out that the entire cost of the Model Farm, including the irrigation system, has been underwritten by the M. Penn Phillips Co.

"And despite the high initial costs, all future experiments will continue to be paid for by our company," added Washington.

## Christmas Valley LODGE



## Christmas Valley Lodge Center of Social Life

It's always busy at our popular Christmas Valley Lodge but things were never more hectic than during our Fish Fry Dinner which culminated the Farmers' Land Demonstration Days.

Everyone here was busy serving the delicious dinners buffet style to the hungry visitors. It must be our invigorating and pure Christmas Valley air. Anyhow, we served several hundred Fish Fry Dinners that Friday night.

The Christmas Valley Lodge had an illustrious visitor recently, Monroe Sweetland, of the State House of Representatives in Salem, visited our Christmas Valley offices and took several brochures back with him.

Marie Simms of the Southern Oregon College at Ashland is writing her term paper about Christmas Valley. Marie and her family visited the bustling project and interviewed several residents and workers to gather information for her paper.

Grace Brown is now the 'Maid of D' at the Christmas Valley Lodge. Grace got off to a hectic start when nearly 50 people showed up

for breakfast at the Lodge. That was the day 17 planes from Klamath Falls and other nearby towns flew in for a look at our Christmas Valley. That same day the M. Penn Phillips Co. plane arrived with Mr. Phillips aboard. And the Dooiey Brothers flew in 35 customers in a DC-3 plane.

Velma Boyer and her son, Mike, will be gone for a short time. Velma and Mike will visit her sister in San Diego.

Twenty ladies, members of the Summer Lake Home Extension Club, held a meeting and enjoyed a ham luncheon at the Lodge.

Members of the Fort Rock School went on a field trip recently. They toured the big Gilchrist Lumber Co. mill and ate lunch at the Gilchrist park. There are now 29 pupils in the Fort Rock School.

A second crew of engineers has arrived at Christmas Valley. Chuck Adams of San Diego is the new party chief of the second crew. Chuck and Mrs. Adams and their three children are temporary residents of Christmas Valley Trailer Court. Tim Cady and Mike Roden of Bend are members of the engineering crew.

Mr. and Mrs. Kenneth Tuttle of Santa Cruz, Calif., have just moved to Christmas Valley. The Tuttle said they planned to build and operate a Laundromat of the newest design at Christmas Valley.

## WHAT WAS YOUR HOME STATE?

With many of you Christmas Valley property owners, we're sure your future home state will be right here in Oregon. But because we have so many property purchasers from all over the country, we thought it might be entirely possible for old neighbors to become reunited again at

beautiful Christmas Valley.

Your Christmas Valley Gazette editors will be happy to arrange possible meetings between old friends. All you have to do is to fill in the form below and mail it to the Christmas Valley Gazette, Box 888, Azusa, Calif.

If we get enough letters to do so, we might even start State Clubs.

1. We came to Oregon from:  
City .....
  2. Our former street address was: .....
  3. Our present address is .....
- Signed: .....  
Christmas Valley Lot No. ....  
Unit No. ....

**CHRISTMAS VALLEY MOTEL**  
PLAN A FAMILY VACATION AT CHRISTMAS VALLEY  
Electric Heat  
Twin or Double Beds  
Call or Write for Reservations  
**CHRISTMAS VALLEY MOTEL**  
P. O. Box 41 - Silver Lake Oregon  
Phone: 576-2270

*Sirmy Simms Melody Homes*  
"AMERICA'S OUTSTANDING SHELL HOME PROGRAM"

# NOW THE FIRST TIME OFFERED HERE HITS

THE NATIONALLY ADVERTISED

### CHECK THESE FEATURES

- ★ 100% FINANCING ON YOUR LOT.
- ★ VARIETY OF DESIGNS.
- ★ MANUFACTURER'S GUARANTEE.
- ★ AVAILABLE IN SEVERAL STAGES OF CONSTRUCTION.
- ★ BUY AS MUCH HOME AS YOU WANT. YOU FINISH AND SAVE UP TO 50% OR WE WILL FINISH FOR YOU.
- ★ CHOICE OF WESTINGHOUSE INTERIORS.
- ★ NO RESTRICTIONS, WILL BUILD ON FARMS, LAKES, MOUNTAINS, BEACHES.
- ★ YOUR CHOICE...TYPE OF SIDING and ALUMINUM or WOOD WINDOWS.
- ★ NOT PRE-FAB...CUSTOM BUILT FROM PRECISION PRE-CUT LUMBER.
- ★ MEETS ALL GI AND FHA SPECIFICATIONS.
- ★ OFFERED IN COOPERATION WITH WEST COAST LUMBERMEN'S ASSN. AND DOUGLAS FIR PLYWOOD ASSN.

A Home she will be proud of  
A gift of a lifetime  
AS LOW AS **\$4995 to \$9995**  
ON YOUR LOT...Prices Dependent on Model and Stage of Completion Desired

**FREE**  
WESTINGHOUSE SPACE-MATES OR CHOICE OF APPLIANCE WITH ORDERS THE FIRST TEN DAYS FROM THIS AD!  
CALL TODAY!

**CALL TODAY EV 2-2773**

**W<sup>2</sup> CONSTRUCTION COMPANY**  
444 East Clay Bend, Oregon

**FREE ESTIMATES**  
Both 2 and 3 Bedroom Homes Available

Please Send Me More Information  
NAME \_\_\_\_\_  
ADDRESS \_\_\_\_\_  
CITY \_\_\_\_\_ PHONE \_\_\_\_\_

LOS ANGELES AREA REPRESENTATIVE  
**KEITH TOVEY**  
DI. 4-8115

## Christmas Valley Has Brand New Belle, Laurie Ann

Christmas Valley's newest and cutest resident is Laurie Ann Fullington, daughter of Wayne and Pat Fullington. Laurie Ann, who weighed in at an even 7 pounds, is the first girl born of Christmas Valley parents.

Pat, who is an accountant at Christmas Valley, and Wayne have two other children. The Fullington's are farming 240 acres here.

Christmas Valley's first child, who appropriately enough was named Chris, arrived April 8th at St. Charles Hospital at near-by Bend. Chris is the son of Reese (Joe) Murphy and his wife Dorothy.

**Subscribe to the Christmas Valley Gazette**

**Christmas Valley Dude Ranch**

Horse Rental  
Hourly Rate  
\$1.50 hour  
\$7.00 per day

Trail Rides  
Arrow Head Hunts  
Scenic Rides

Ralph Fullington  
P. O. Box 41  
Silver Lake, Oregon  
Phone: 576-2212

**WELL DRILLING**  
PUMPS — PUMP SERVICE

**GORDON GOERES**  
Silver Lake, Oregon  
Phone: 576-2181